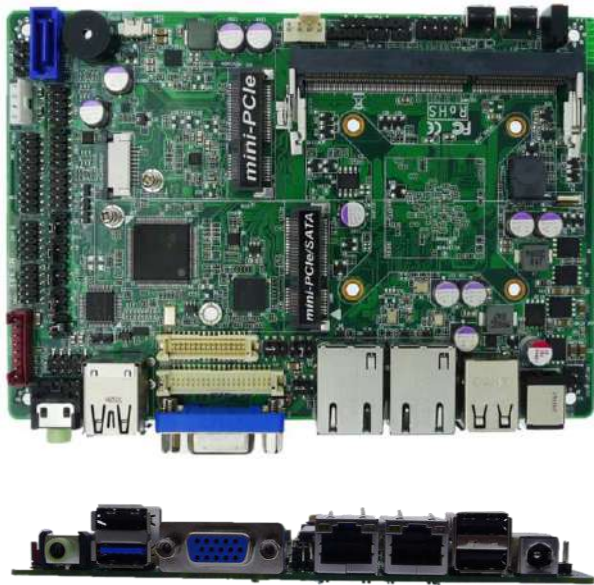


NF3AE Series

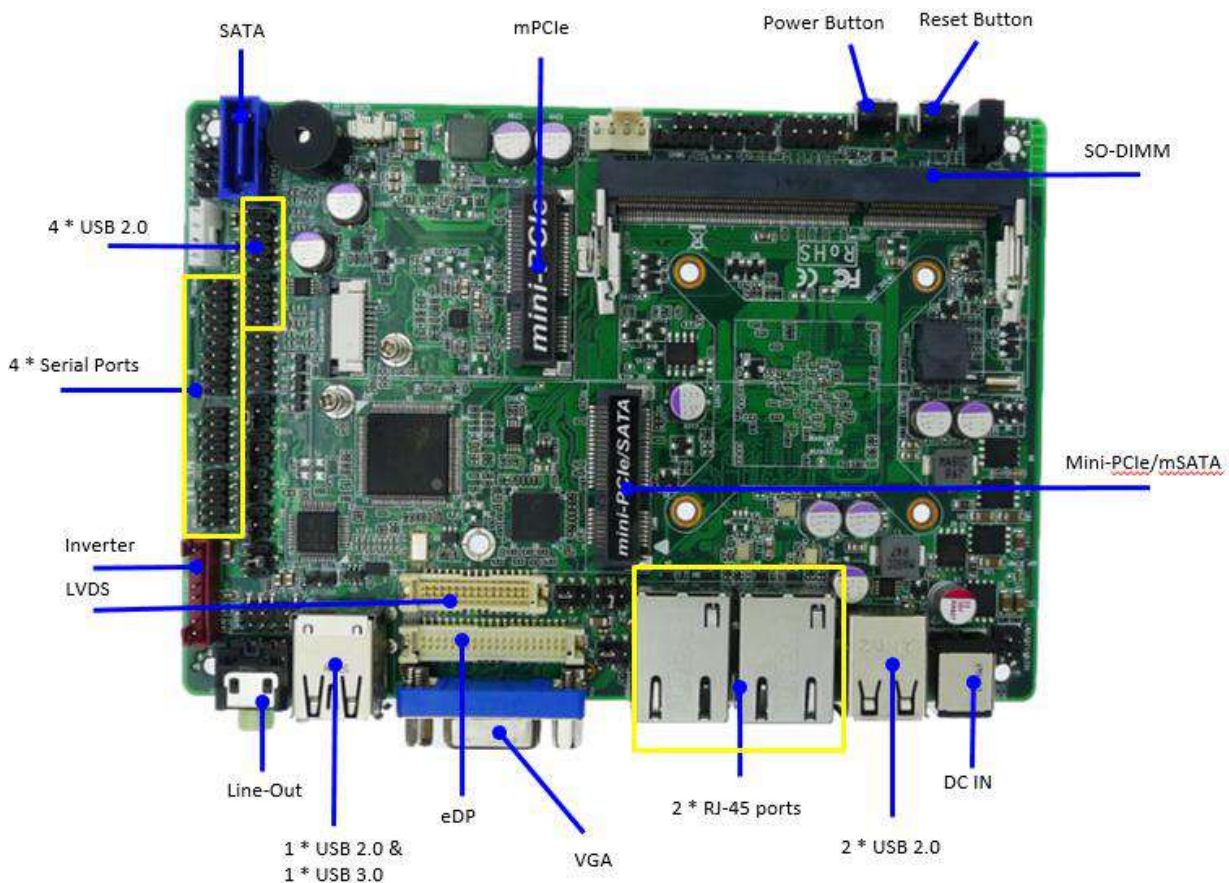
Intel® Bay Trail Series SoC Processor, DDR3L up to 8GB, support VGA/LVDS/eDP display



1. Intel® Bay Trail Series SoC Processor (Default is J1900/N2930)
2. Support 1 * DDR3L 1333MHz SO-DIMM, up to 8GB
3. Support 1 * Serial ATAII (3Gb/s) Device
4. Integrated Realtek ALC662 HD Audio CODEC with OP Amplifier
5. 1 * 24-bits Dual Channel LVDS header and 1 * 4-lane eDP header
6. Support VGA output
7. Supports 2 * Realtek RT8111G GbE
8. Support CPU Smart FAN
9. Support Watch Dog Timer 0~255 sec
10. 3.5" SBC Form Factor (148mm * 102mm)



Internal Diagram



Specifications

Form Factor	
Dimensions	- 3.5" SBC (148 * 102mm)
Processor System	
CPU	- Intel® Bay Trail Series SoC Processor (default is J1900/N2930)
Core Number	- (by CPU)
Max Speed	- (by CPU)
L2 Cache	- (by CPU)
Chipset	- SoC
BIOS	- AMI 64Mb Flash ROM
Expansion Slot	
Mini-PCIe	- 1 (full size, shared with mSATA) & 1 (half size)
mSATA	- 1 (full size, shared with mPCIe)
Memory	
Technology	- Single/Dual Channel DDR3L 1333MHz SO-DIMM (by CPU)
Max.	- 8GB
Socket	- 1 * SO-DIMM
Graphics	
Controller	- Intel® HD Graphics
VRAM	- Shared Memory
VGA	- 1 (Max. resolution: 1920 * 1200@60Hz)
LVDS	- 1 (24-bits Dual channel connector, Selectable with eDP, not working while using LVDS, Max. Resolution: 1920 * 1200@60Hz)
eDP	- 1 (Selectable with LVDS, not working while using eDP, Max. Resolution: 2560 * 1600@60Hz)
MultiDisplay	- Yes (Dual Displays)
Ethernet	
Ethernet	- 10/100/1000 Mbps
Controller	- Realtek RTL8111G GbE
Connector	- 2 * RJ45
Audio	
CODEC	- HD Audio: Realtek ALC662
Channel	- 2 Channel w/OP Amplifier
SATA	
Max Data Transfer Rate	- 1 * SATAII (3.0Gb/s)
Rear I/O	
VGA	- 1

Ethernet	- 2
USB	- 4 (1 * USB 3.0 & 3 * USB 1.1/2.0)
Audio	- 1 (Line-out)
DC-input	- 1
Internal Connector	
USB	- 4 (4 x USB 2.0)
PS/2	- 1
LVDS / inverter	- 1 (Selectable with eDP, not working while using LVDS)
eDP	- 1 (Selectable with LVDS, not working while using eDP)
Serial	- 4 (3 * RS232, 1 * RS232/422/485 with 5V/12V selectable header)
SATA	- 1 * SATAII (3.0Gb/s)
mPCIe	- 1 (full size, shared with mSATA), 1 (half size)
mSATA	- 1 (shared with mPCIe)
GPIO	- 1 (8 bit)
Chassis intrusion	- 1
Audio Header	- 1 (Line-out & MIC)
SMBUS	- 1
AT mode	- 1
Watchdog Timer	
Output	- From Super I/O to drag RESETCON#
Interval	- 256 segments, 0,1,2...255sec/min
Power Requirements	
Input PWR	- +9~24V DC-in
Power On	AT/ATX Supported - AT: Directly PWR on as Power input ready - ATX: Press Button to PWR on after Power input ready
Certifications	
Certifications	- CE, FCC, RoHS, REACH
Environment	
Temperature	- Operating: -20°C ~ 60°C - Storage: -40°C ~ 70°C - Humidity: 10% ~ 90% RH @40°C (non-condensing)
Warranty	
Warranty	- 2 Years Limited Warranty

*Specifications subject to change without notice, not responsible for typographical errors. Does not include HDD or OS.

Accessories

Part Number	Description
	JNF3AE
G01-SATA-BK-B-2F	SATA cable
G01-PW4PS-2S-323F	SATA Power cable
G01-COM-H2M22-1F	COM cable



Jetway Information Co., Ltd.

Tel: +886-2-89132711 E-mail: sales@jetway.com.tw Web: www.jetwayipc.com

Support: technic@jetway.com.tw or support_team@jetway.com.tw